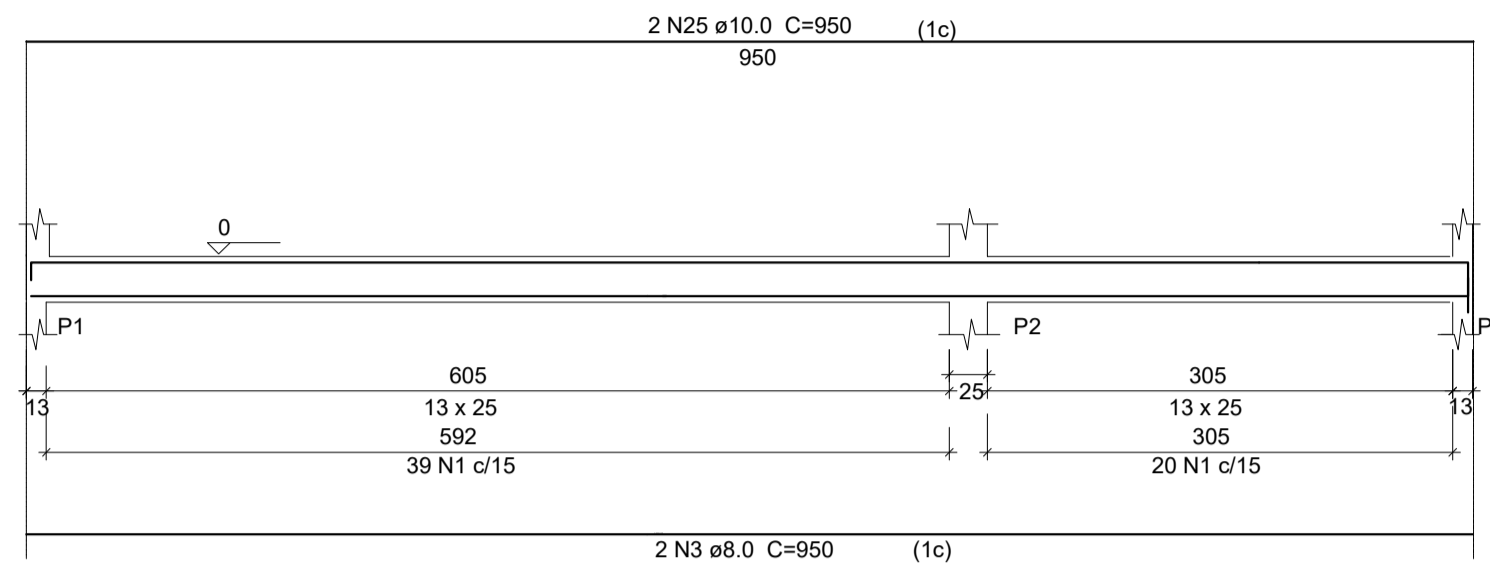
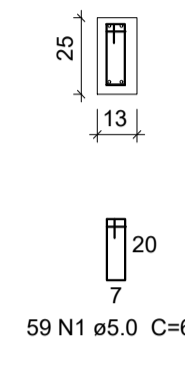


VIGA BALDRAME

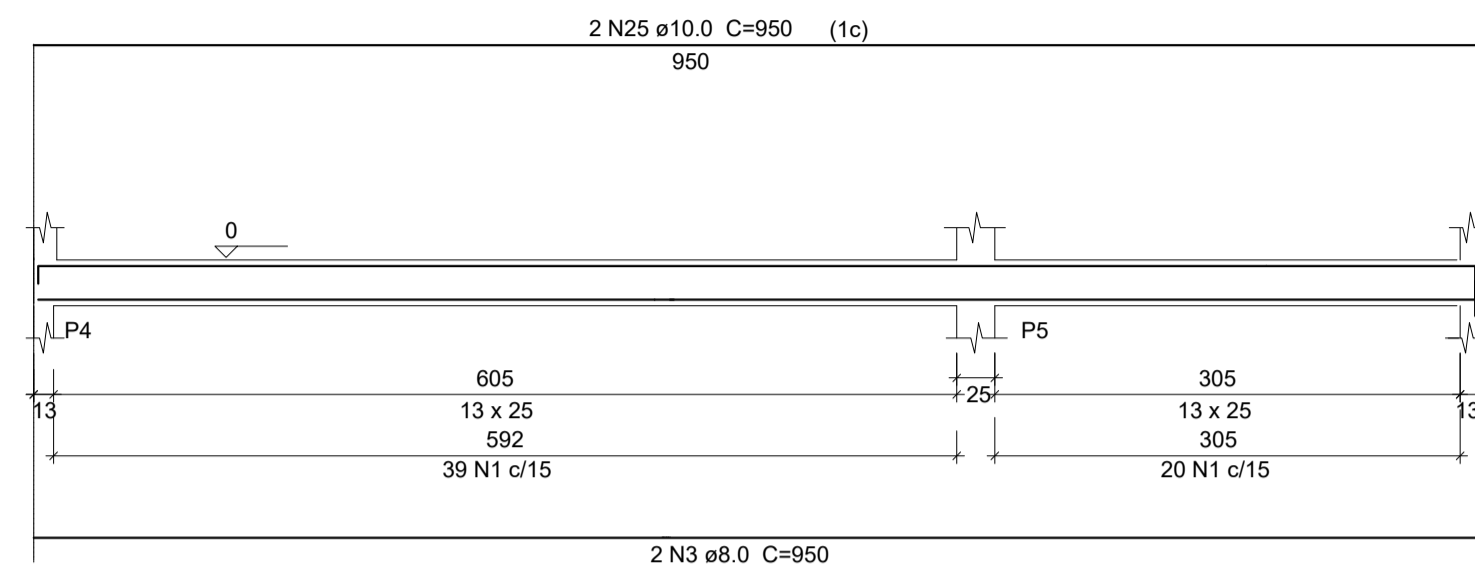
V1
ESC 1:50



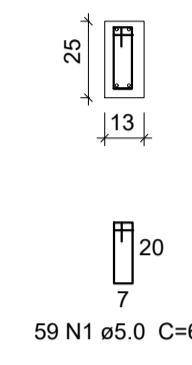
SEÇÃO A-A
ESC 1:25



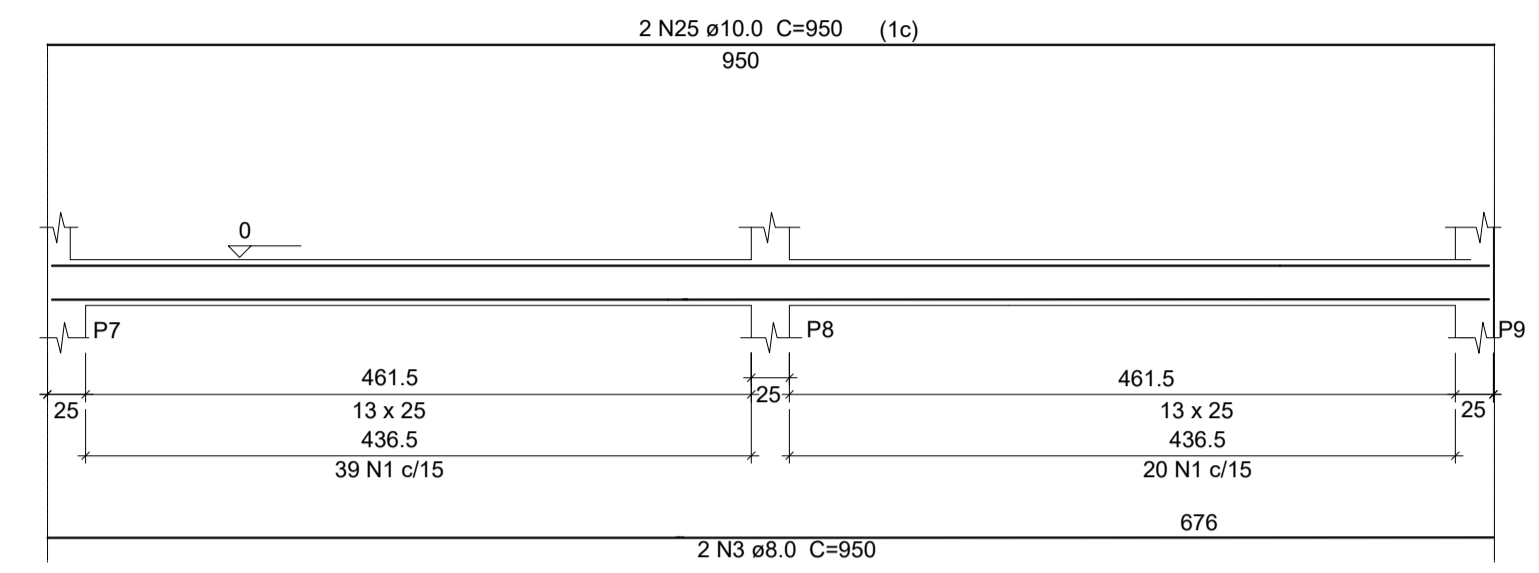
V2
ESC 1:50



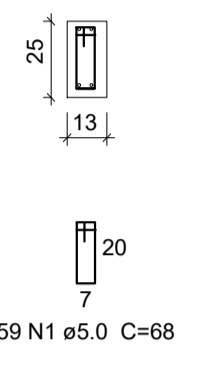
SEÇÃO A-A
ESC 1:25



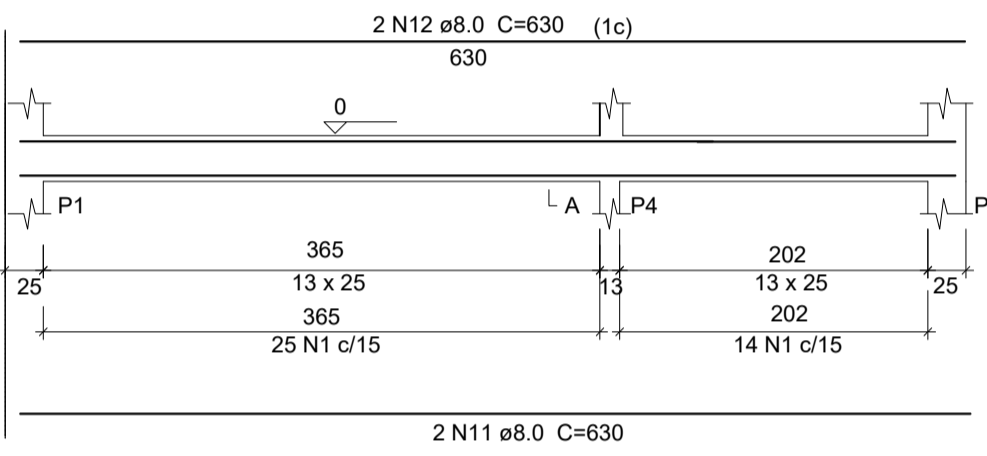
V3
ESC 1:50



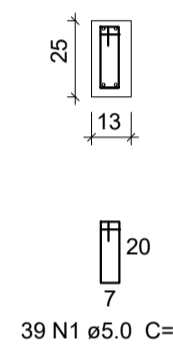
SEÇÃO A-A
ESC 1:25



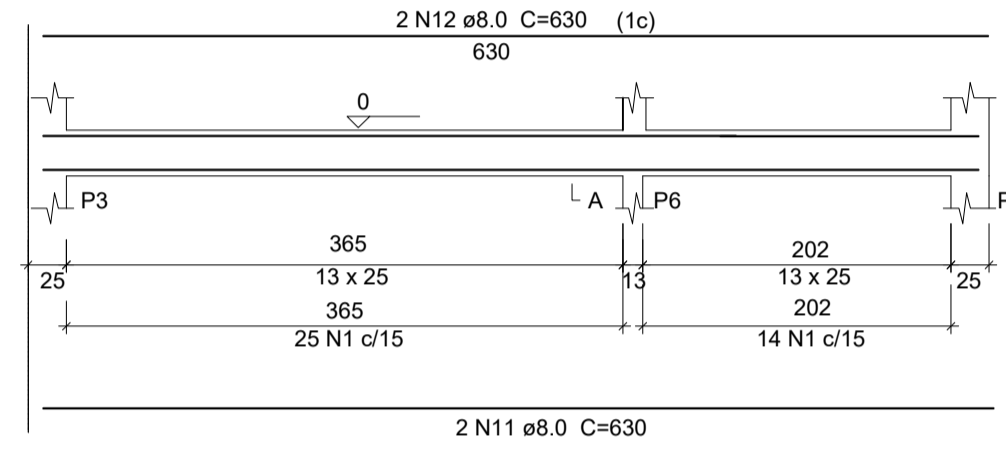
V4
ESC 1:50



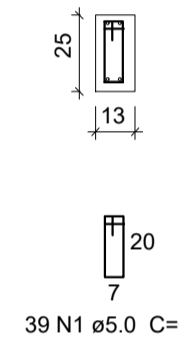
SEÇÃO A-A
ESC 1:25



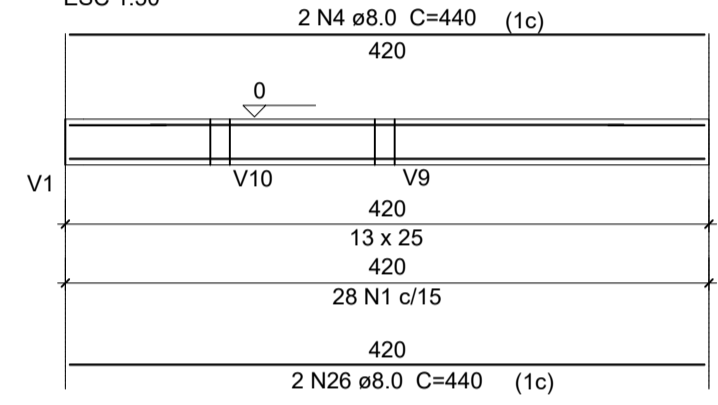
V5
ESC 1:50



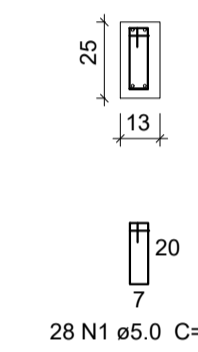
SEÇÃO A-A
ESC 1:25



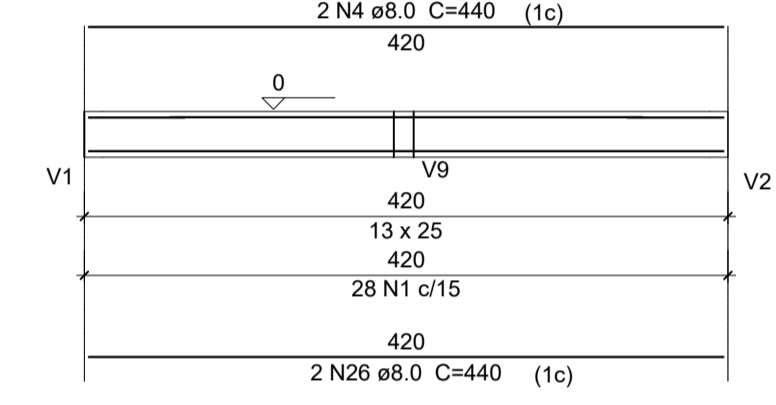
V6
ESC 1:50



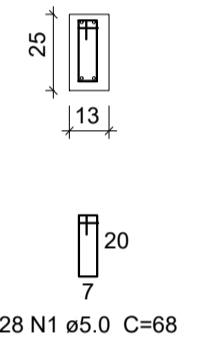
SEÇÃO A-A
ESC 1:25



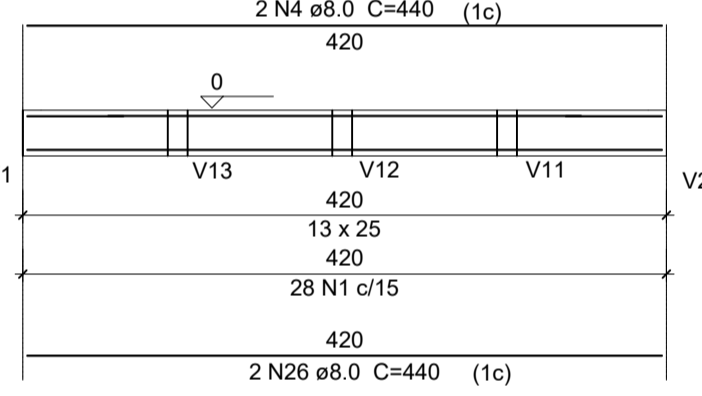
V7
ESC 1:50



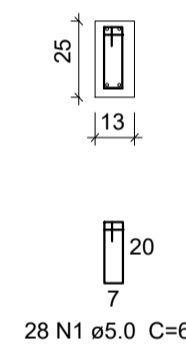
SEÇÃO A-A
ESC 1:25



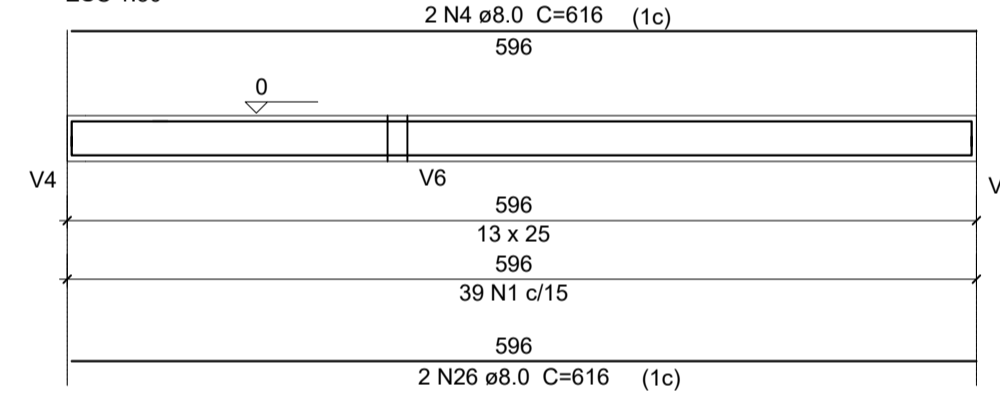
V8
ESC 1:50



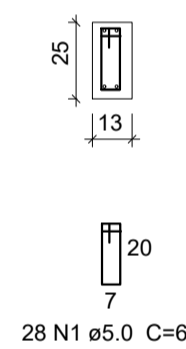
SEÇÃO A-A
ESC 1:25



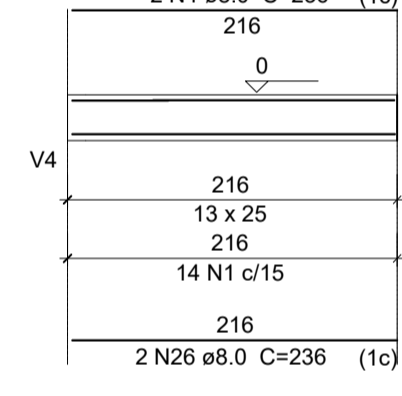
V9
ESC 1:50



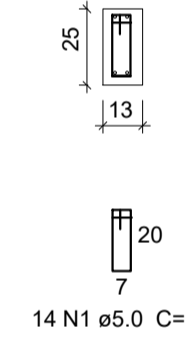
SEÇÃO A-A
ESC 1:25



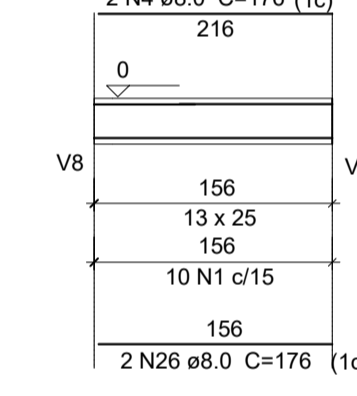
V10
ESC 1:50



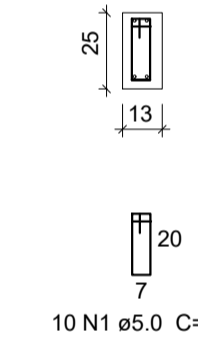
SEÇÃO A-A
ESC 1:25



V11=V12=V13
ESC 1:50



SEÇÃO A-A
ESC 1:25



Resumo do aço

AÇO	DIAM	C.TOTAL (m)	PESO + 10 % (kg)
CA50	8.0	304	120,1
CA60	5.0	294,44	45,4

Vol. de concreto total (C-25) = 2,12 m³
Área de fôrma total = 36,4

Obra:
Reforma e Ampliação da Escola Municipal de Ensino Fundamental Eurico Valle

Prefeitura Municipal de Rurópolis
TRABALHO E DESENVOLVIMENTO
CPF/CNPJ: 10.222.297/0001-93
Rua 10 de Maio, nº 263.
Bairro: Centro.

Autor do projeto:

JEFFSON TAVEIRO CRUZ SANTOS
CREA/PA: 151407790-6

Jeffson Taveiro Cruz Santos
ENG. CIVIL CREA-PA: 151407790-6
jeffsontaveiro@gmail.com
(65) 9 9234 -1364

Data:

JANEIRO /2021

Endereço da Obra/Serviço:
Av. dos Imigrantes, 308.
Bairro: Centro
Rurópolis/PA, CEP: 68165-000

Visto da Prefeitura:

Conteúdo da Folha:
Detalhamento das Vigas Baldrame.

Responsável pela Execução:

CREA / CAU

Área do terreno: m²

Área construída coberta: 62,40 m²

Escala: INDICADA

Folha: A-01 (840x594mm)

PROJETO:
ESTRUTURAL II -
VIGA BALDRAME

